



2006-2007 Testing Report

Plymouth Public Schools

November 2007

Part 1: Introduction

Goals (page 1)

- Provide data for research
- Improve curriculum and instruction
- Summarize student achievement

Assessment Program & Schedule (page 2)

- Massachusetts Comprehensive Assessment System (MCAS)
- Massachusetts English Language Assessment-Oral (MELA-O),
Massachusetts English Proficiency Assessment (MEPA)
- MCAS Alt.

Supporting Students (page 6-8)

- Individual Student Success Plans (ISSP)



Part II: Testing Results and Analysis

- MCAS results (grades 3-8 and 10): graphic comparisons
- Color-coded Strand Item Analysis
- District Writing Analysis
- Longitudinal Analysis of Question Types
- Scaled Score Intervals
- Longitudinal Strand Analysis
- Cohort Comparison
- Longitudinal SAT

District Data Overview (page 9-11)

ELA – %Passing	PPS (State)	Math – %Passing	PPS (State)	Science %Passing	PPS (State)
Grade 3	95% (91%)	Grade 3	92% (84%)		
Grade 4	95% (90%)	Grade 4	91% (87%)		
Grade 5	95% (91%)	Grade 5	89% (82%)	Grade 5	95% (88%)
Grade 6	95% (93%)	Grade 6	85% (80%)		
Grade 7	96% (92%)	Grade 7	84% (76%)		
Grade 8	97% (94%)	Grade 8	82% (75%)	Grade 8	86% (76%)
Grade 10	95% (95%)	Grade 10	91% (91%)	HS Biology	80% (76%)
ELA – %Proficient	PPS (State)	Math – %Proficient	PPS (State)	Science – %Proficient	PPS (State)
Grade 3	68% (59%)	Grade 3	71% (60%)		
Grade 4	62% (56%)	Grade 4	53% (48%)		
Grade 5	74% (63%)	Grade 5	55% (51%)	Grade 5	66% (51%)
Grade 6	73% (67%)	Grade 6	53% (52%)		
Grade 7	78% (69%)	Grade 7	49% (40%)		
Grade 8	83% (75%)	Grade 8	44% (45%)	Grade 8	41% (33%)
Grade 10	73% (71%)	Grade 10	68% (69%)	HS Biology	44% (42%)

NCLB Standard

~ All students Advanced or Proficient by 2014 (Percent Proficient and Advanced) page 15-26

Testing Group	PPS/ State	PPS/ State	PPS/ State	PPS/ State
ELA gr. 4	2004	2005	2006	2007
CS	78/56	51/50	58/50	56/56
FFES	69/56	67/50	57/50	69/56
Hedge	34/56	31/50	39/50	43/56
IB	65/56	61/50	74/50	59/56
Manomet	54/56	55/50	38/50	43/56
NMES	75/56	60/50	77/50	73/56
SES	67/56	63/50	62/50	69/56
WES	60/56	50/50	48/50	61/56

	PPS/ State	PPS/ State	PPS/ State	PPS/ State
Math gr. 4	2004	2005	2006	2007
CS	57/42	57/40	35/40	45/48
FFES	64/42	78/40	48/40	60/48
Hedge	34/42	31/40	38/40	61/48
IB	65/42	53/40	57/40	51/48
Manomet	37/42	48/40	28/40	54/48
NMES	55/42	50/40	55/40	64/48
SES	50/42	55/40	40/40	52/48
WES	44/42	37/40	27/40	44/48

NCLB Standard

~ All students Advanced or Proficient by 2014 (Percent Proficient and Advanced) page 27-52

Testing Group	PPS/ State	PPS/ State	PPS/ State	PPS/ State
<i>Reading/ELA</i>	2004	2005	2006	2007
PCIS gr. 7	75/68	76/66	73/65	79/69
PSMS gr. 7	82/68	76/66	63/65	77/69
PNHS gr. 10	67/62	70/64	70/69	78/71
PSHS gr. 10	71/62	74/64	80/69	80/71
PSTech gr. 10	45/62	59/64	60/69	67/71
<i>Science</i>				
grade 5	68/55	65/51	63/50	66/51
PCIS gr. 8	36/33	33/33	39/33	41/33
PSMS gr. 8	34/33	40/33	29/33	43/33

	PPS/ State	PPS/ State	PPS/ State	PPS/ State
<i>Math</i>	2004	2005	2006	2007
PCIS gr. 6	38/43	44/46	49/46	57/52
PSMS gr. 6	28/43	37/46	38/46	47/52
PCIS gr. 8	28/39	27/39	39/40	44/45
PSMS gr. 8	31/39	47/39	42/40	48/45
PNHS gr. 10	61/57	66/62	65/67	72/69
PSHS gr. 10	53/57	70/62	72/67	67/69
PSTech gr. 10	36/57	49/62	51/67	69/69

Number of Students Failing *Gr. 10 MCAS*

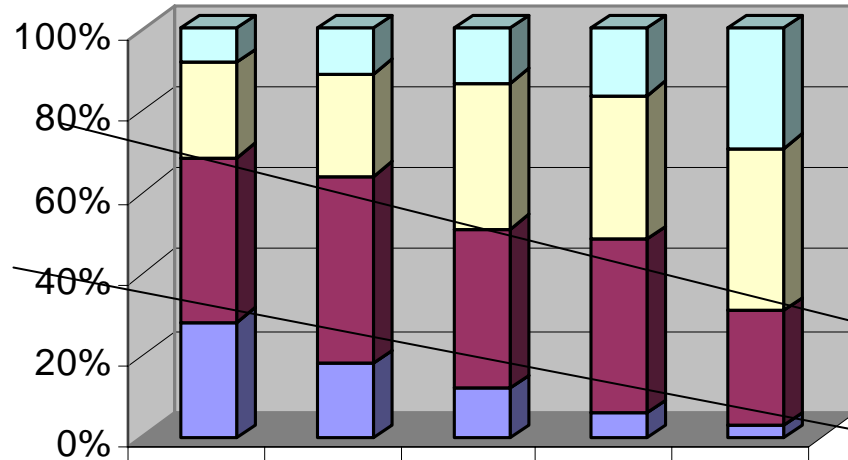
(extracted from page 41/48 data and previous yrs.)

YOG	2003	2004	2005	2006	2007	2008	2009
MCAS Administration Yr.	2001	2002	2003	2004	2005	2006	2007
ELA only	38	13	11	20	3	4	19
Math only	80	72	62	70	36	27	23
ELA & Math	38	26	27	17	28	17	4
Total (before retest)	156	111	100	107	67	48	46
Total (after retests & appeals)	9	6	0	3	2	7	?

MCAS Graphic Comparisons (page 48)

PS Tech. Grade 10 Math

Percent of students



	2003	2004	2005	2006	2007
Advanced	8	11	13	16	29
Proficient	23	25	36	35	40
NI	40	46	39	42	28
Warning	28	18	12	6	3

Strand Item Analysis (grade 4 ELA) pg. 23

#	type	strd	CS	FF	H	IB	Man	NM	SES	WES	Dist	State	Item Description
42	wp	CC	6.86	7.19	6.63	6.98	5.97	7	6.74	6.73	6.81	6.64	8 pts Conventions.
41	wp	CT	7.62	7.81	7.25	7.82	6.35	7.81	7.45	7.29	7.5	7.34	12 pts Topic Development.
7	mc	LA	76	77	88	87	88	85	80	94	84	81	S4 Vocabulary. Voyager. True about cited words: compound nouns
12	mc	LA	93	86	96	88	85	93	83	87	88	82	S4 Vocabulary. Lantern. What "wailed" tells about the younger wife
16	mc	LA	76	80	71	83	72	89	82	83	81	75	S5 English Structure. Puppy. Why is "Silk" capitalized in line 20
24	mc	LA	97	97	83	91	83	90	89	88	90	89	S5 English Structure. Jane. Which word is a verb: squashed
25	mc	LA	79	77	79	80	87	90	79	75	81	82	S4 Vocabulary. Jane. Most likely meaning: on the wing - flying
34	mc	LA	79	84	83	86	83	85	84	90	85	81	S4 Vocabulary. Dirt. Which could replace word: fractures - breaks
37	mc	LA	83	83	83	86	88	83	87	87	85	82	S4 Vocabulary. Stone. Meaning: everyone...himself - people don't help
1	mc	LT	97	91	92	95	88	91	93	88	92	91	S13 Nonfiction. Voyager. How honeycomb improved chance nonstop flight
2	mc	LT	100	88	96	97	92	97	97	92	95	90	S13 Nonfiction. Voyager. Which best describes Voyager's cockpit

Scores > or = 80% green	MC=Multiple Choice	LA=Language
Scores from 60% to 79% yellow	OR= Open Response	LT=Literature
Scores below 60% pink		

District Writing Analysis 03-07

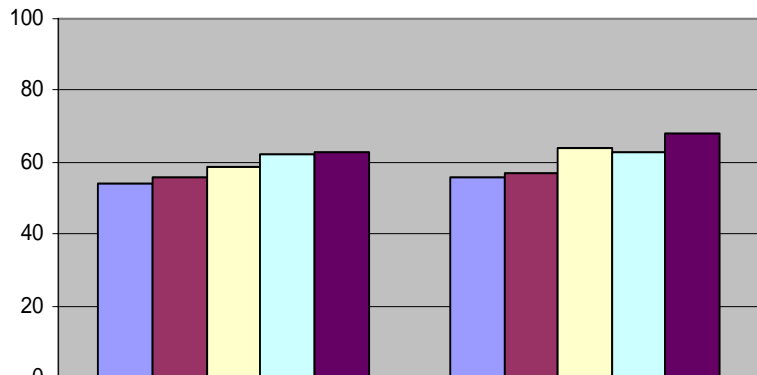
English Language Arts Long Composition (page 53)

Annual Growth		Score out of 20 - points					PPS
<i>Dist./Sch.</i>	<i>Gr.</i>	2003	2004	2005	2006	2007	Diff. (03-07)
<i>Plymouth</i>	4	14.5	14.4	14.7	15.0	14.3	-.20
	state	13.7	13.9	14.1	13.9	14.0	+.30
<i>PCIS</i>	7	14.5	14	14.6	14.0	13.5	-1.0
	state	14.1	13.9	14.3	13.9	13.3	-.80
<i>PSMS</i>	7	14.8	14.1	14.5	14.0	13.4	-1.4
	state	14.1	13.9	14.3	13.9	13.3	-.80
<i>PNHS</i>	10	15.9	15.6	15.5	14.7	14.9	-1.0
	state	15.4	15.4	15.5	15.1	14.6	-.80
<i>PSHS</i>	10	16.0	15.8	15.7	15.4	14.9	-1.1
	state	15.4	15.4	15.5	15.1	14.6	-.80
<i>PSTech</i>	10	14.7	14.9	15.4	14.6	14.3	-.40
	state	15.4	15.4	15.5	15.1	14.6	-.80

Longitudinal Analysis of Question Type

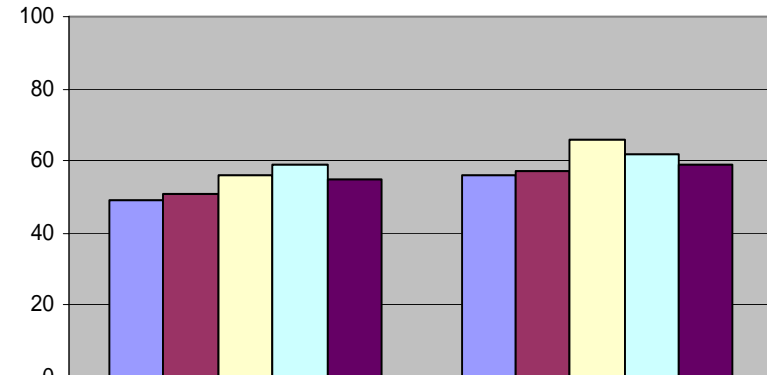
(page 60)

Grade 8 Math - MC



Percent Correct

Grade 8 Math - OR



■ 2003-MC	54	56
■ 2004-MC	56	57
■ 2005-MC	59	64
■ 2006-MC	62	63
■ 2007-MC	63	68

■ 2003-OR	49	56
■ 2004-OR	51	57
■ 2005-OR	56	66
■ 2006-OR	59	62
■ 2007-OR	55	59

Category	Scaled Score	ELA 2007							
		CS	FF	H	IB	Man	NM	SES	WES
Advanced	276-280	0	2	0	0	0	3	2	3
	272-274	0	0	0	0	0	0	0	0
	268-270	1	2	0	1	0	5	3	0
	264-266	3	8	2	2	1	7	10	4
	260-262	0	3	0	2	0	9	5	3
Proficient	256-258	1	6	2	6	3	5	14	2
	252-254	3	4	1	9	3	15	15	2
	248-250	2	6	1	17	4	13	15	3
	244-246	0	8	2	19	6	12	7	6
	240-242	6	8	2	19	8	10	26	9
Needs Improvement	236-238	3	1	4	15	6	6	5	4
	232-234	4	7	3	6	6	8	6	5
	228-230	5	1	1	14	6	3	11	5
	224-226	0	5	3	7	6	1	5	1
	220-222	1	5	1	8	6	4	9	2
Warning	216-218	0	1	1	2	3	1	7	1
	212-214	0	0	0	0	1	1	0	1
	208-210	0	0	0	0	0	0	0	0
	204-206	0	0	0	0	0	0	0	0
	200-202	0	0	0	0	0	0	0	0
Total Students		29	67	23	127	59	103	140	51

Scaled Score Comparison (ELA grade 4) page 72

Cohorts Percent Advanced-Proficient / Failing (page 68-71)

YOG (current grade)	ELA3	ELA4	ELA5	ELA6	ELA7	ELA8	ELA10
2008 (gr. 12)		28/5			77/2		69/4
2009 (gr. 11)		62/6			77/3		73/5
2010 (gr. 10)	71/3	67/5			76/2	82/4	
2011 (gr. 9)	77/3	70/4			69/4	83/3	
2012 (gr. 8)	72/4	65/3		70/5	78/4		
2013 (gr. 7)	71/3	59/4	68/4	73/5			
2014 (gr. 6)	71/2	61/6	74/5				
2015 (gr. 5)	64/3	62/5					
2016 (gr. 4)	68/5						

Part III: Massachusetts School and District Accountability System

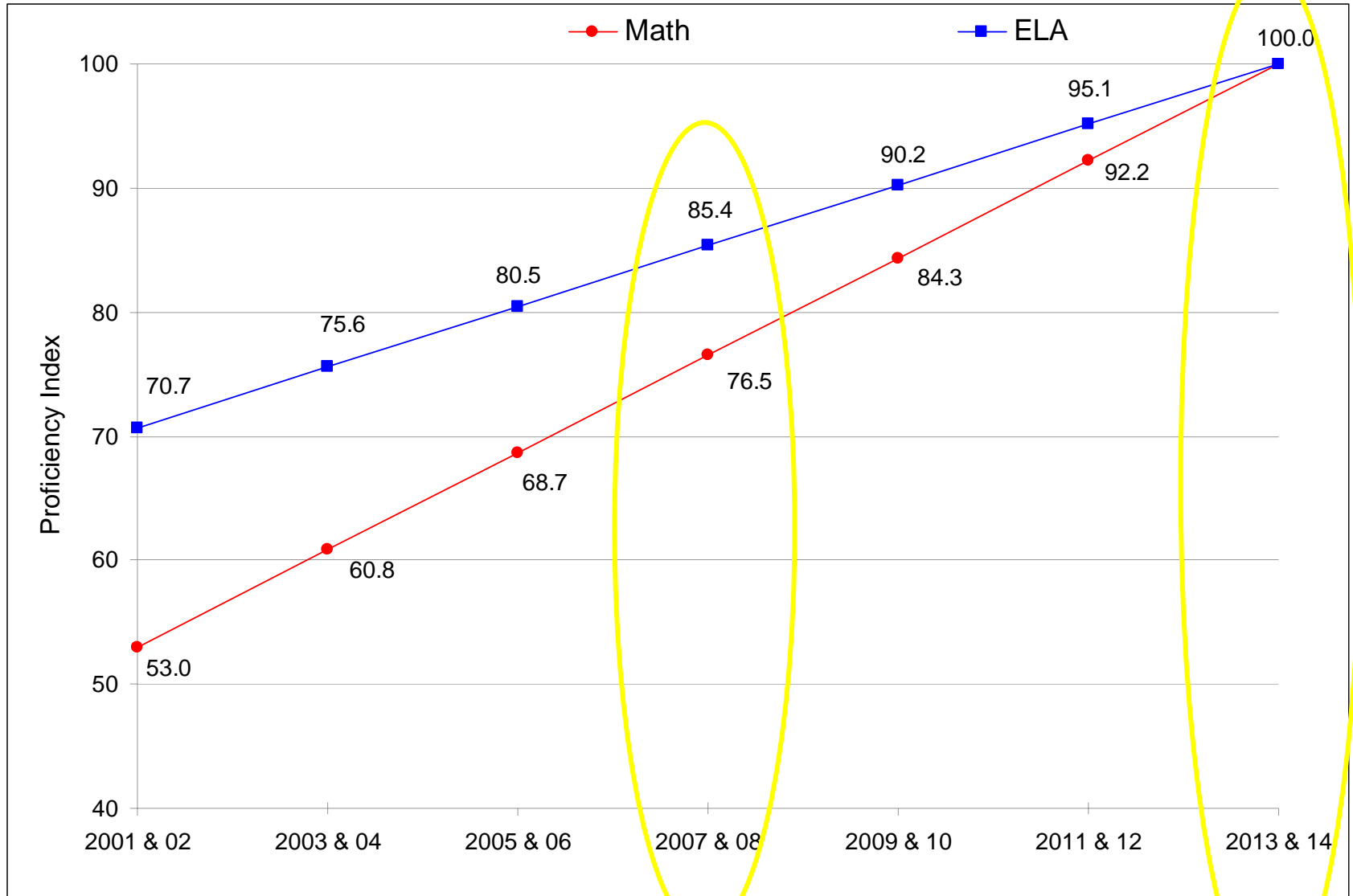
Adequately Yearly Progress (AYP) Guide (page 77-79)

- A= Participation (95% or greater)
- B= Performance (State Targets - 85.4 ELA, 76.5 Math)
- C= Improvement (Meet or exceed 2007 Improvement Target)
- D= Attendance/Graduation Rate (Gr. 1-8 & Districts: 92% or 1% improvement over 2006, HS: 55% or higher graduation rate for 2006 cohort)

AYP Determination Formula = (A+B+D) or (A+C+D)

School and District AYP Reports (page 80-96)

Massachusetts NCLB Performance Targets for ELA and Mathematics 2002-2014



Subgroup Proficiency Index-PI (pg. 79)

School	CPI							
	ELA subgroups (<i>State target 85.4</i>)				Math subgroups (<i>State target 76.5</i>)			
	SPED	Low Income	African American	White	SPED	Low Income	African American	White
Cold Spring		90.6		91.2		88.8		82.8
Federal Furnace	82.8	80.0		90.4	87.5	77.0		89.2
Hedge		82.0		87.7		78.2		87.1
Indian Brook	76.8	82.8		90.2	61.9	70.7		84.9
Manomet	64.2	80.6		84.6	64.2	80.8		85.6
Nathaniel Morton	81.7	88.4		93.1	75.5	84.8		88.0
South	72.4	78.2		87.2	67.8	73.4		82.2
West	65.9	76.9		86.9	65.9	71.3		79.0
PCIS	71.2***	84.4	79.8	93.1	45.7***	62.5	51.9	76.7
PSMS	74.4	87.2		91.3	52.4	64.9		76.7
PNHS	60.9	75.0		92.8	63.0	76.4		88.9
PSHS		90.0		93.1		77.5		86.3
PSTech	67.5	86.3		87.8	76.3	87.1		87.1
DISTRICT	71.4*	83.3	79.2	90.5	59.2**	70.1	64.1	80.8

*Improvement
 **Corrective Action
 ***Restructuring

Black/bold=met State target
 Blue=within 5 points
 Green=within 10 points
 Red=greater than 10 points



Part IV: District Improvement Plan

(page 97-102)

- Improvement Goals
- Professional Development Goals
- District Inservice Program



Part V: School Testing Reports

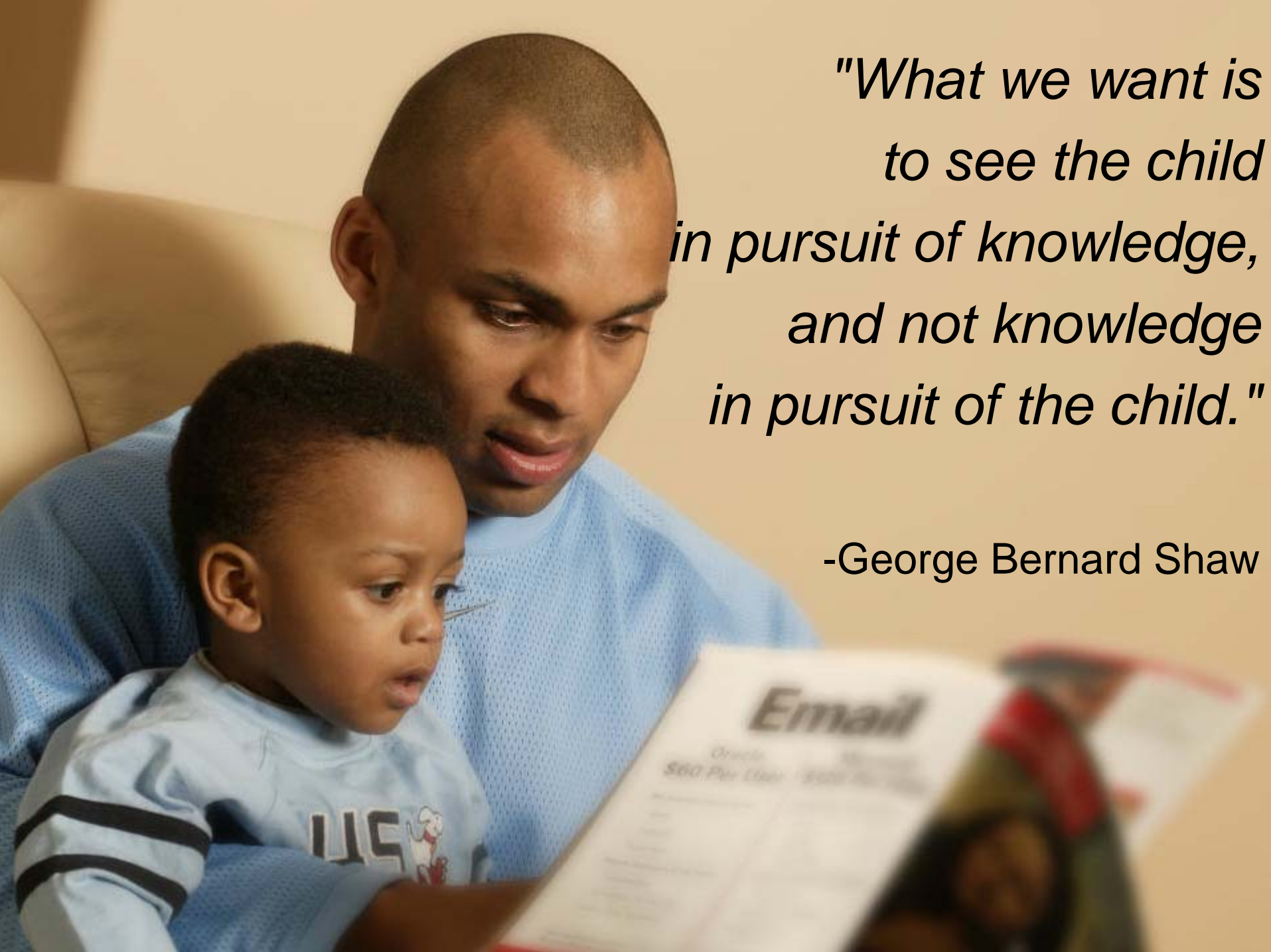
School Data Teams

- Administrators
- Classroom Teachers
- Special Education Teachers
- Guidance Counselors
- Coordinators



Curriculum & Instruction– Next Steps

- English Language Arts/Reading
- Mathematics
- Science, Engineering & Technology
- History & Social Science
- Special Education
- Performance Improvement Mapping (PIM)
- Remediation Program



*"What we want is
to see the child
in pursuit of knowledge,
and not knowledge
in pursuit of the child."*

-George Bernard Shaw